

Two-Bolt Connectors

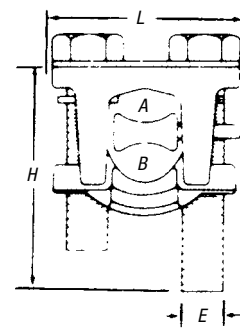
Ringed, contoured spacer swings easily over conductor.

Type 2BW — Two-Bolt Connector with Spacer

- For use on copper conductors only
- Single-piece construction spacer
- Castings and bolts made of high-strength copper alloy
- Spacer made of ductile, high-conductivity copper alloy
- UL® 486A Listed for copper conductor only



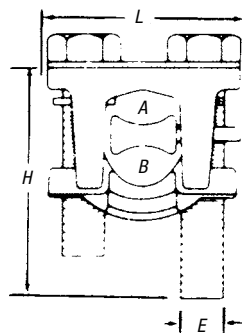
CAT. NO.	CONDUCTOR RANGE (AWG OR KCMIL)				CONDUCTOR DIAMETER				BOLT HEAD	DIMENSIONS (IN.)		
	MAIN		TAP		A		B			L	H	E
	MAX.	MIN.	MAX.	MIN.	MAX.	MIN.	MAX.	MIN.				
2B10W	1/0 Str.	2 Str.	1/0 Str.	10 Sol.	.373	.292	.373	.102	1/2	1 1/16	1 1/8	5/16
2B20W	2/0 Str.	2 Str.	2/0 Str.	8 Sol.	.419	.292	.419	.128	1/2	1 1/16	1 1/8	5/16
2B40W	4/0 Str.	1/0 Str.	4/0 Str.	6 Sol.	.528	.368	.528	.162	3/16	1 23/32	2 1/8	3/8
2B350W	350 kcmil	4/0 Str.	350 kcmil	4 Sol.	.681	.522	.681	.204	3/4	2 1/8	2 1/2	1/2
2B500W	500 kcmil	350 kcmil	500 kcmil	4 Sol.	.813	.679	.813	.204	3/4	2 1/4	2 3/4	1/2
2B800W	800 kcmil	600 kcmil	800 kcmil	2 Sol.	1.031	.891	1.031	.258	3/4	2 1/2	3 1/4	1/2
2B1000W	1000 kcmil	750 kcmil	1000 kcmil	2 Sol.	1.152	.997	1.152	.258	1 1/16	2 31/32	3 3/4	5/8



For use on copper, aluminum and ACSR conductors.

Type 2BPW — Two-Bolt Connector with Spacer

- Single-piece construction spacer
- UL® 486A Listed for copper conductor only



CAT. NO.	CONDUCTOR RANGE (AWG OR KCMIL)				CONDUCTOR DIAMETER				BOLT HEAD	DIMENSIONS (IN.)		
	MAIN		TAP		A		B			L	H	E
	MAX.	MIN.	MAX.	MIN.	MAX.	MIN.	MAX.	MIN.				
2B10PW	1/0-2	1/0-6	1/0 Str.-2 Str.	1/0 Str.-2 Sol.	.398	.292	.398	.102	1/2	1 1/16	1 1/8	5/16
2B20PW	2/0-2	2/0-6	2/0 Str.-2 Str.	1/0 Str.-2 Sol.	.447	.292	.447	.128	1/2	1 1/16	1 1/8	5/16
2B40PW	4/0-1/0	4/0-6	4/0 Str.-1/0 Str.	4/0 Str.-1/0 Sol.	.563	.368	.563	.162	3/16	1 23/32	2 1/8	3/8
2B350PW	350-4/0	350-4	350-4/0	350-4 Sol.	.680	.522	.680	.204	3/4	2 1/8	2 1/2	1/2
2B500PW	397.5-336.4	397.5-4	500-350	500-4 Sol.	.813	.679	.813	.204	3/4	2 1/4	2 3/4	1/2
2B800PW	666.6-397.5	666.6-2	800-600	800-2 Sol.	1.031	.891	1.031	.258	3/4	2 1/2	3 1/4	1/2
2B1000PW	900-666.6	900-2	1000-750	1000-2 Sol.	1.162	.997	1.162	.258	1 1/16	2 31/32	3 3/4	5/8